



European Union



Inter Aide
Sierra Leone

Kardia Hand Pump Guideline



I. The Head Assembly



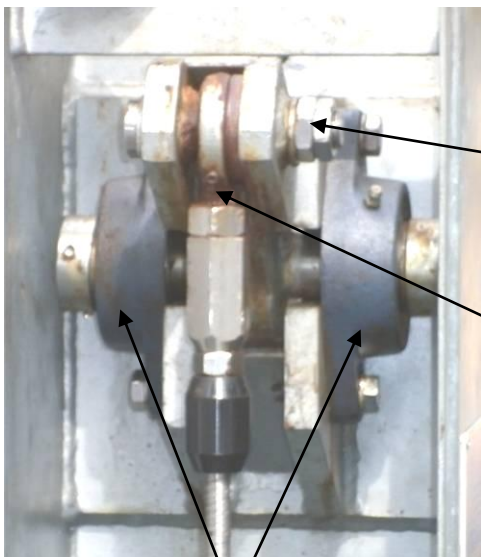
You can dismantle the head assembly with an Allen key 8 mm.



Connecting Rod

Water Tank

Riser Pipe



Flange Bearing



¼ Bolt (24 mm Bolt)

Cost: 145 Leones



Link Head

Link head is different according to the type of Kardia (Kardia 65/Kardia 2000).

Cost: 175 000 Leones

Flange bearings are different according to the type of Kardia (Kardia 65/Kardia 2000).

Cost: 265 000 Leones for 1 so, 530 000 Leones for the set.



Use 2 spanners (22 mm & 24 mm) to unscrew the ¼ Bolt.

On Kardia, it is difficult to work with a connecting rod clamp. That is why in the tool box you will find a rod plier



Rod plier



Clip

Before removing the water tank and the pipes, you need to unscrew the clip of the water tank

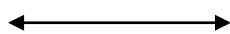
II. The Low Assembly



Pipe socket
DN40



You need 2 riser pipe clamps (picture above) to work on Kardia and 2 riser pipe pliers in order to unscrew the pipes



Long Nut

Riser Pipe

Connecting Rod

Connecting Rod

Riser Pipe



For 1 pipe, you have 1 connecting rod of the same size. You can find only three sizes: 3m, 1m, 0.5m. Rods are linked together by a long nut

III. The Cylinder (Kardia 2000)



Make sure that holes of the valve plate are matching with the ones of the valve seating. If this is not checked, the piston cannot work properly.



Rubber seating

Valve Plate

Pump Bucket

Valve seating



Rubber seating
Foot valve

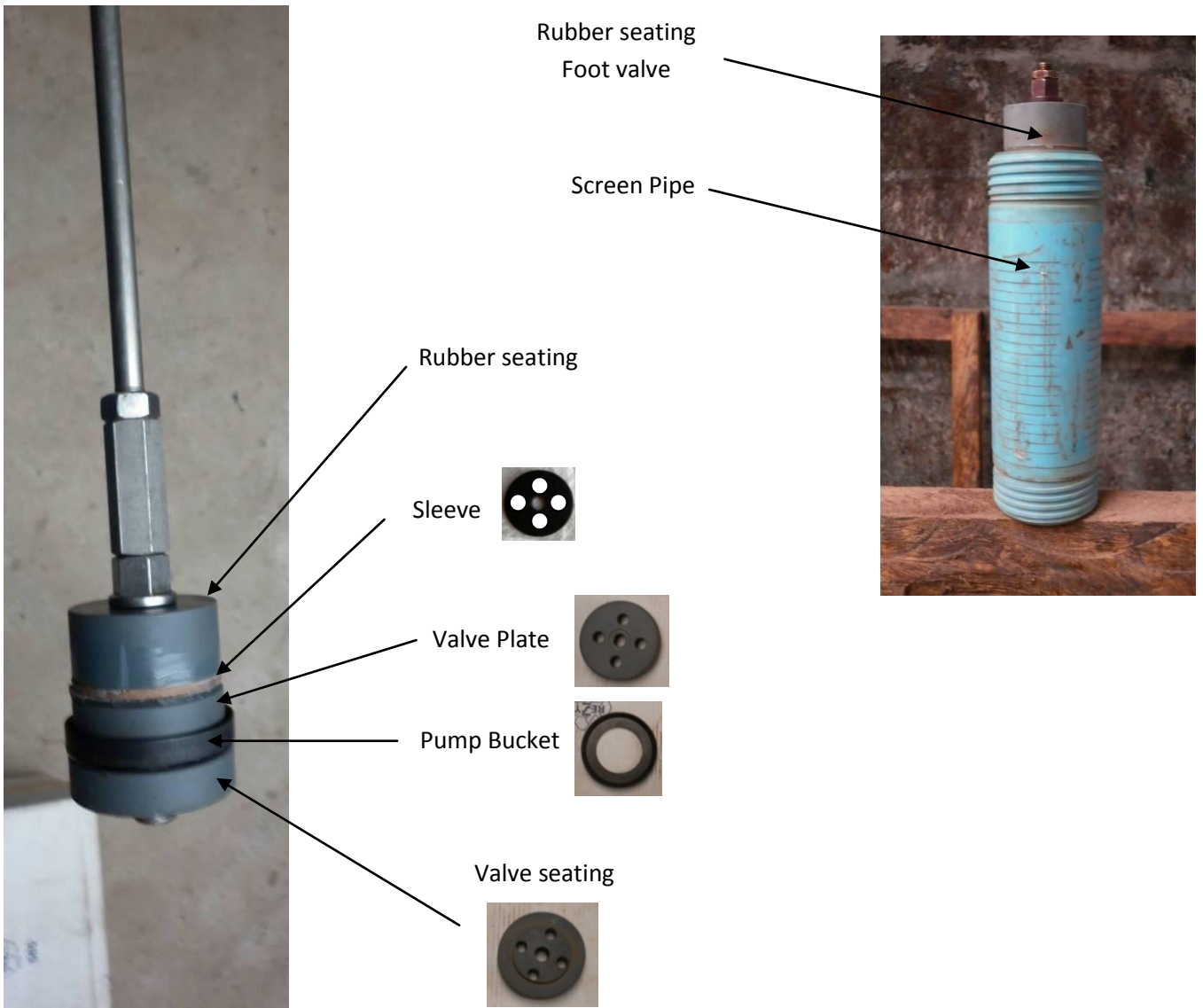
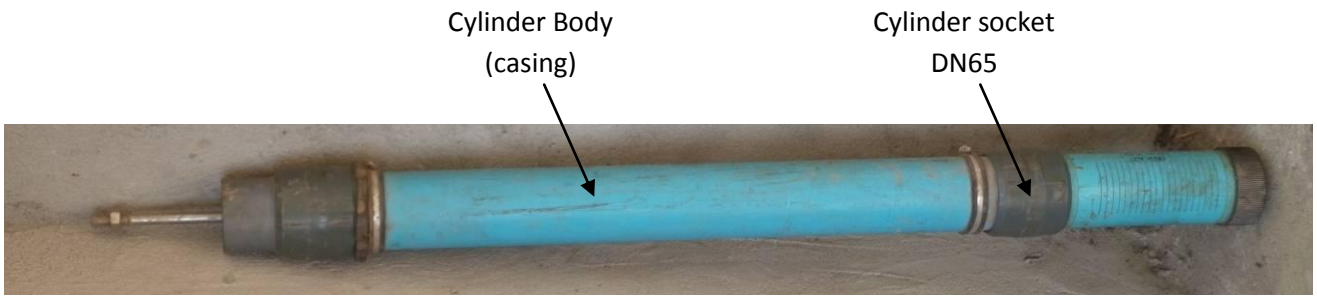
Screen Pipe



The screen pipe is a filter, preventing sand and mud entering the cylinder which could cause damage to the seals.

Cost of the cylinder: 1 150 000 Leones

IV. The Cylinder (Kardia 65)



The difference between Kardia 65 and Kardia 2000:

- the piston is made up of 4 seals for Kardia 2000 and 5 for Kardia 65 (piston sleeve)
- the rubber seating on K2000 & K65 are different
- You need a reducer to tighten the screen pipe on K2000 while it is not necessary on K65